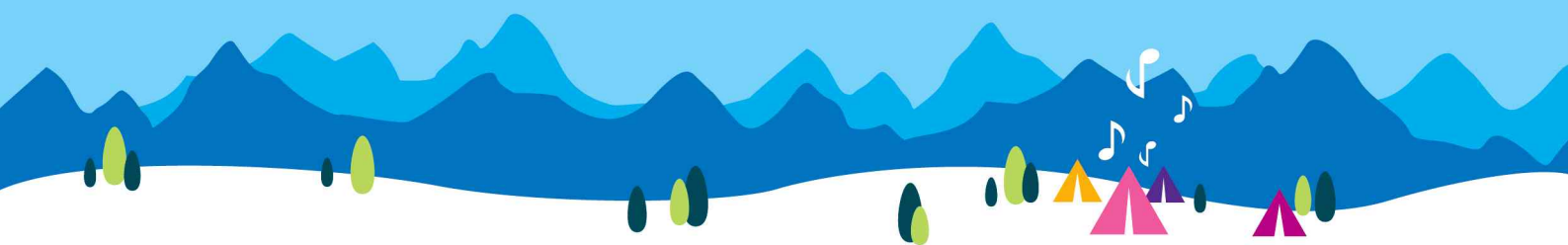




# 25<sup>th</sup> World Scout Jamboree

## Jamboree Circular #23



The Organizing Committee for the 25<sup>th</sup> World Scout Jamboree – 2023 SaeManGeum  
Le comité d'organisation du 25<sup>e</sup> Jamboree Scout Mondial – 2023 SaeManGeum



17 July 2023

## Contents

### I . FAQ Update

### II . Unit Allocation

## I . FAQ Update

As mentioned in our previous announcement, we are uploading updates of the Jamboree preparation via google docs file. Currently, there are 32 items that we have, or will upload in the near future.

The item list is as follows,

1. Shower and Toilet Facilities
2. Address for Different Use
3. Contingency Plan - Evacuation Procedure - Crisis Management Manual
4. Comprehensive Situation Room
5. Jamboree Money
6. Programme
7. Obtaining Approval for Prohibited Medication
8. Medication Requires Refrigeration
9. Medical Devices in need of Power Outlet Overnight
10. Reception Reservation & Payment Deadline
11. IST Registration & Check-in Process
12. External Media Registration
13. External Media Support
14. Two-way radio Use in the Jamboree Site
15. Jamboree Desk Location in the Airport
16. Welcome Center Check-in process
17. Preparation for Participants with Disabilities
18. IST Check-in Process
19. How to Obtain IST Award
20. Nominate one flag bearer for the Opening Ceremony
21. Open Call for Support Staff for Special Events
22. Jamboree Platform
23. Jamboree QR Code and App Installation
24. Approval Process
25. Jamboree Fee
26. Food
27. Big Dinner
28. Jamboree Forest Operations Manual

29. Local Programme Overview
30. Jamboree Kit
31. Site Map
32. Convenience Facilities

For more information on each subject, click the link below

- Link :

[https://docs.google.com/document/d/1AHoL3JzAD\\_aF-44ZzCdpO8iZxA2UoZ27DQf8DOU9CLY/edit?usp=sharing](https://docs.google.com/document/d/1AHoL3JzAD_aF-44ZzCdpO8iZxA2UoZ27DQf8DOU9CLY/edit?usp=sharing)

## II . Unit Allocation

Unit camp life is one of the most memorable experience at the Jamboree as to provide the opportunity of cultural exchange. We have considered this as our priority in allocating all units on the Jamboree Site to maximize this experience for every participant. Please refer to the attached appendix for details of the result.

### [Appendixes]

Appendix 23-1: Unit Allocation